



The Hunter Douglas® 2 years Quality Guarantee is an expression of our desire to provide a thoroughly satisfying experience when selecting, purchasing and living with your window fashion products.

COVERED :

- Defects in materials, workmanship or failure in assembling.
- Internal mechanisms (components and brackets).
- Repairs and/or replacements will be made with like or similar parts or products.
- Labor and transportation within 2 years guarantee.
- Motorization components are covered for 2 years from the date of purchase.

NOT COVERED :

- Any conditions caused by normal wear and tear.
- Abuse, accidents, misuse or alterations to the product.
- Exposure to the elements (sun damage, wind, water/moisture) and discoloration or fading over time.
- Failure to follow our instructions with respect to measurement, proper installation, cleaning or maintenance.

Please contact with your local dealer for warranty service.



Luminette® Privacy Sheers

OPERATION3-4
CLEANING5-7
MAINTENANCE8
CHARACTERISTICS 9-14

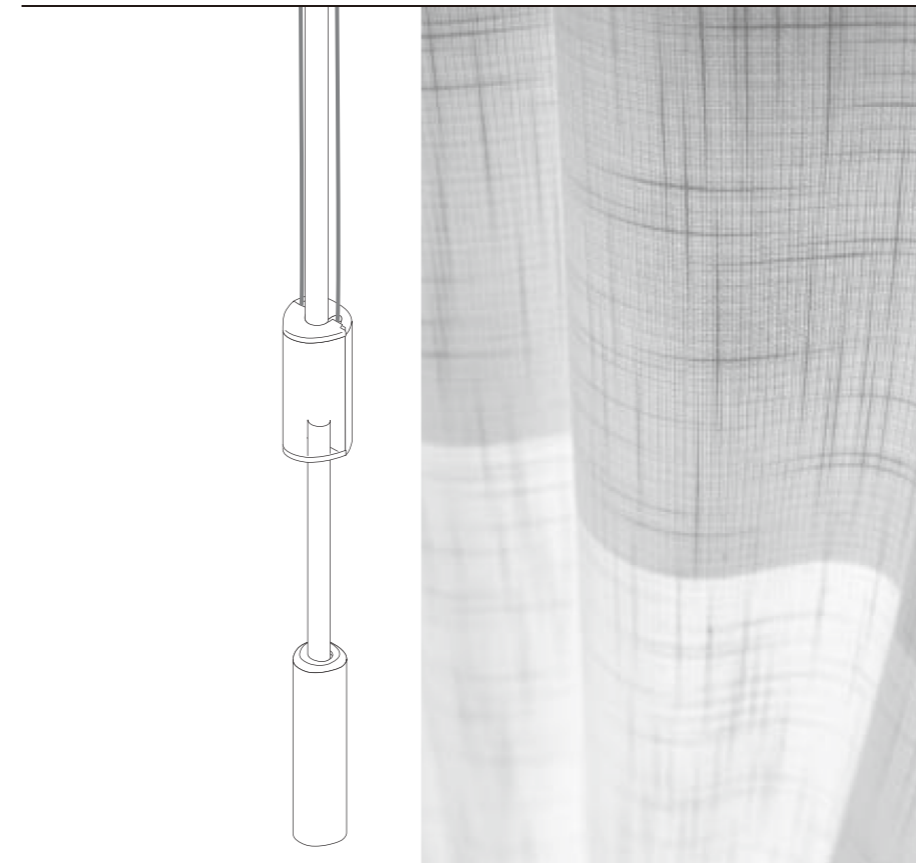
Thanks for choosing Hunter Douglas. Correct operation and cleaning will help to maintain beauty and functionality of your window covering product for many years to come.



Luminette®

Privacy Sheers

Combination Wand/Cord Travelling Wand™



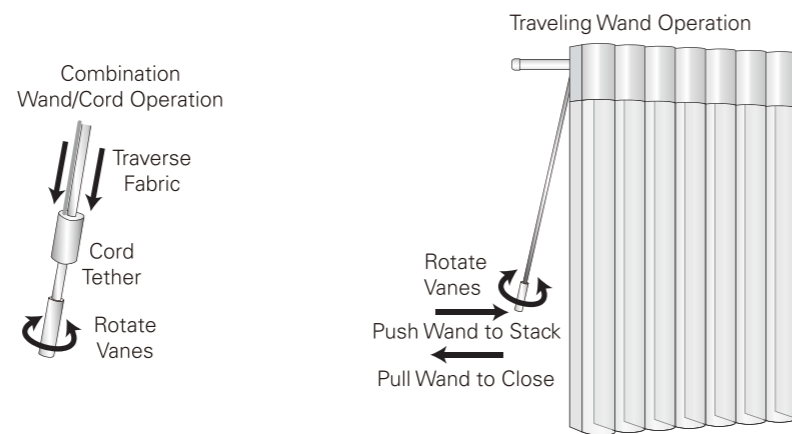
Combination Wand/Cord

- A single integrated control for traversing the fabric and rotating the vanes.
- Pulling the cord traverses the sheer or drapery; turning the wand rotates the vanes.

Travelling Wand™

- A single control for operating Luminette® Privacy Sheers.
- Pushing or pulling the wand traverses the fabric; turning the wand rotates the vanes.

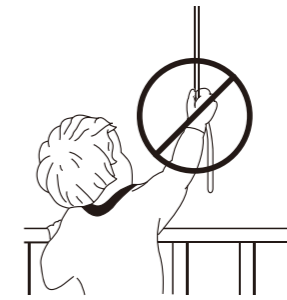
Important: The vanes must always be open when traversing the fabric.



WARNING ⚠

Young children can get STRANGLED in cord loops. They can also wrap cords around their necks and STRANGLE themselves.

Always keep cords out of the reach of children. Move cribs, playpens and other furniture away from cords. Children can climb on furniture to get to cords.

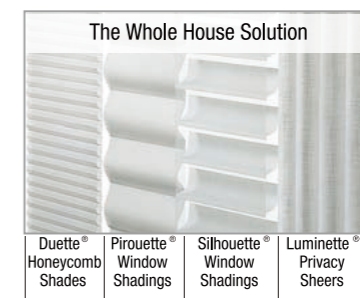


PowerView®

Please refer to the User Manual for PowerView operation guide.

THE WHOLE HOUSE SOLUTION™

Along with Luminette, Hunter Douglas offers a range of matching fabrics in Silhouette, Pirouette and Duette, that will help you to create a varied and yet harmonious design for your home.



Cleaning Procedures

The sheer, valance, and vane fabric are all made of 100% polyester. They are resilient, anti-static, and dust resistant. Periodic cleaning is recommended to help keep Luminette® Privacy Sheers looking like new. For all cleaning applications, fabrics should remain hanging to minimize handling, wrinkling or puckering.

Important: Disposable gloves should be worn when handling fabrics.

CAUTION: Keep all cleaning solutions away from the SofTrak™ headrail system. Never immerse the headrail.

Routine Cleaning

- Use a feather duster for regular light dusting.
- For more thorough dust removal, a hand-held vacuum with low suction may be used. When vacuuming, avoid pulling or stretching the fabric.
- Start in the upper left corner and work across the fabric using short horizontal strokes while steadying the fabric with your free hand. Each stroke should be approximately the width of two to three vanes. Do not use long horizontal or vertical strokes, as these actions will crease the fabric. Continue to the bottom of the fabric.



Caution: Do not use a brush attachment or rigorous vacuuming since either could distort the fabric.

Electrostatic Cleaning

CAUTION: Do not use electrostatic cleaning devices on any Luminette product.

Spot-Cleaning

To reduce the potential for permanent staining, spots should be treated and cleaned as soon as possible with a clothing stain pre-treatment solution.

- Apply the pre-treatment solution to a clean, white cloth.
- Support the fabric from behind using another clean, dry cloth. Clean the spot using a gentle blotting action. Avoid rubbing the fabric since any abrasive action may cause it to distort.
- Let the area air dry.
- After the area is dry, remove excess solution by blotting it with distilled or bottled water applied to another clean cloth.

Deep Cleaning

- For deep cleaning, both injection/extraction and ultrasonic cleaning methods are recommended.

CAUTION: Do not dry clean Luminette® fabrics.

Injection/Extraction Method

Professional injection/extraction cleaning injects a heated cleaning solution into the fabric and extracts the dirty solution in the same motion. This process is done in the home.

- Vacuum the fabric following the instructions under "Routine Cleaning" on the previous page, prior to the injection/extraction cleaning.
- Have your professional set and maintain their cleaning solution just below steaming.
- Make sure stains are pre-treated to maximize the benefits of cleaning.
- When cleaning the vanes from the back, use a 3" upholstery tool and start at the center of the fabric. Clean one vane at a time from top to bottom working out toward the edge of the fabric. Repeat for the other half of the fabric.

Important: Both sides of each Luminette room-darkening vane need to be cleaned. This is not necessary on Luminette translucent vanes.

- When cleaning the face fabric from the front, close the vanes to the right and use a 4" upholstery tool. Start in the upper left corner, and using short, horizontal strokes (about the width of three vanes), move across the fabric. Clean from the top to the bottom.
- Allow the fabric to dry in the fully traversed position with the vanes opened.
- Steam out any wrinkles.

Ultrasonic Method

Professional ultrasonic cleaning is a process in which the fabric is inserted into a tank of cleaning solution and then subjected to high frequency vibrations. Dirt is loosened from the fabric and carried away in the cleaning solution. This process is done outside the home.

- Ensure the supplier's ultrasonic tank is long enough to accommodate the full length of the fabric without folding the fabric or vanes.
- Ensure the fabrics are rolled onto a tube when being transported to and from the home. This reduces the chance of wrinkling and damage.
- Specify water that does not exceed 90°F throughout the process.

CAUTION: If water temperatures exceed 90°F, oxidation will damage the vanes of Luminette® room-darkening fabrics.

- Make sure stains are pre-treated to maximize the benefits of cleaning.
- Hang fabrics immediately after cleaning with the vanes open and the loops evenly spaced.
- Allow the fabric to drip dry completely.

Wrinkle and Crease Removal

Both the hand and steam machine methods described below are suitable for wrinkle and crease removal. The hand method is more appropriate for smaller areas.

Hand Method

- Rotate vanes to the fully opened position.
- Apply warm distilled or bottled water to a clean, white cloth.
- Support the fabric from behind using another clean, dry cloth.
- Blot the wrinkle or creased area with the wet cloth.
- Let the area air dry.

Steam Machine Method

- Rotate vanes to the fully opened position.
- From behind, direct the steam (maximum temperature 102°F) from a portable steam machine to penetrate the fabric.
- Use slow, short vertical movements. Begin at the top of the fabric and work your way down. Several passes over the creased area may be needed.
- Let the area air dry.

Fabrics

Luminette® Privacy Sheers are exquisitely beautiful. They are also a textile product and can never be absolutely perfect. To ensure customer satisfaction, review the following inherent characteristics

Puckers vs. Wrinkles/Creases

- The fabric is subject to variations associated with textiles such as slight wrinkles and puckers.
- Puckers:
 - Slight puckers are inherent in fabric products
 - Puckers can NOT be eliminated with steaming
 - Over-steaming can cause rippling in fabric
- Wrinkles/Creases:
 - Usually from packaging or shipping damage
 - Can be gently steamed



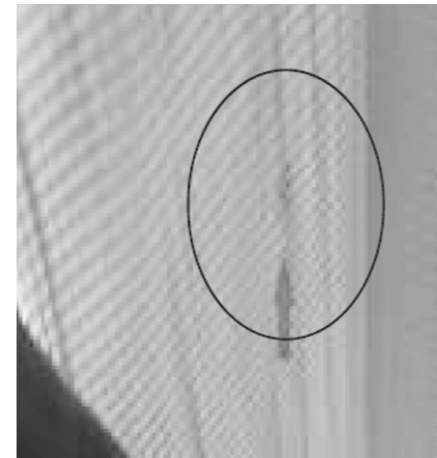
Puckers



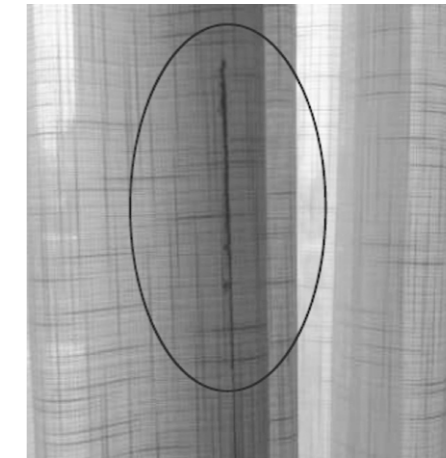
Wrinkles/Creases

Fabric Variations

- Certain textured fabrics, such as Sheer Linen, contain slub yarns, which have thick and thin sections alternating regularly or irregularly. Slubs up to 1/8" are within our specifications and are considered acceptable.



Acceptable Slub



Unacceptable Slub

Vane Closure Gap

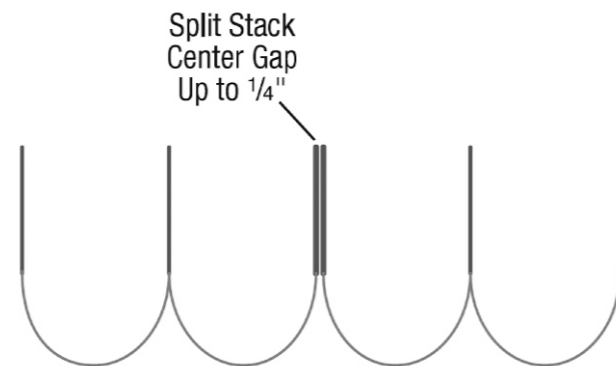
The closed vanes of Privacy Sheers are designed to overlap for privacy when viewed straight on.

- Light leakage may occur due to the vane closure gap, which may increase with the length of the sheer.
- The vane closure gap is most visible when viewed from the side. It is a normal, inherent characteristic of the product and should not be considered a defect.
- Vane closure is tighter in one direction than the other when the vanes are rotated closed.



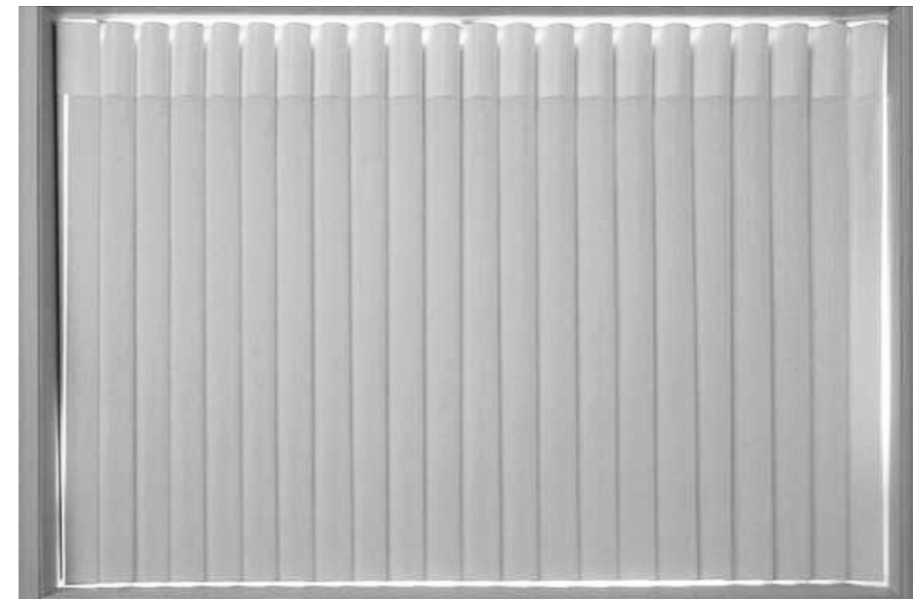
Split Stack Center Gap

- The maximum distance between fabric panels of a split stack design is 1/4".



Inside Mounting Gap

- Inside mounts also have light gaps on the top and bottom, which are particularly noticeable with room-darkening sheers.
- Specifying sheers as outside mounts is ideal because the vanes and fabric are allowed to operate freely. By overlapping the opening, outside mounts provide complete fabric coverage and enhance light control and privacy features.

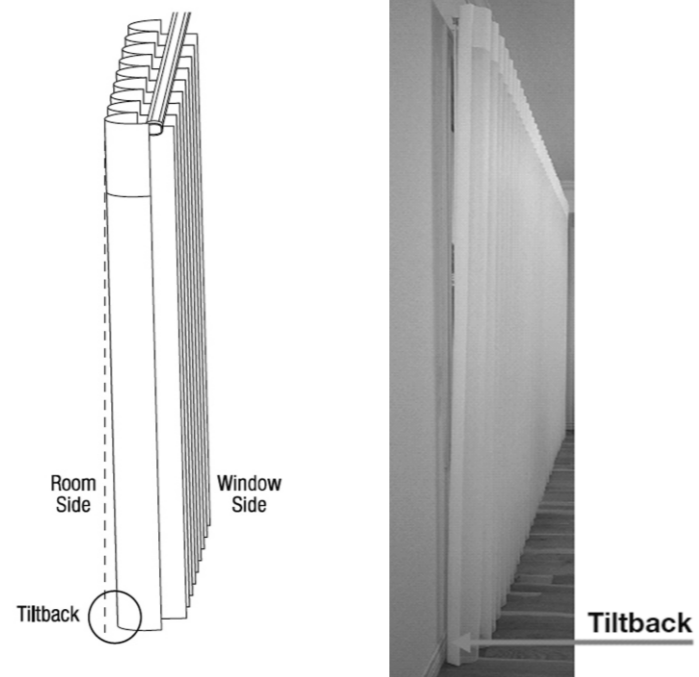


Light gaps are visible on all four sides of this inside-mounted room-darkening sheer.

Tiltback

- Additional weight of the face fabric in front causes the fabric to hang at a slight angle, called “tiltback.”

This is an inherent characteristic of the product and may be more noticeable on shorter panels.



Tenting

- When sheers are stacked, it is normal for them to flare out or “tent” at the bottom, or to stack irregularly due to the heavier fabric.
- To minimize tenting, the consumer can simply close the sheer less tightly.

